

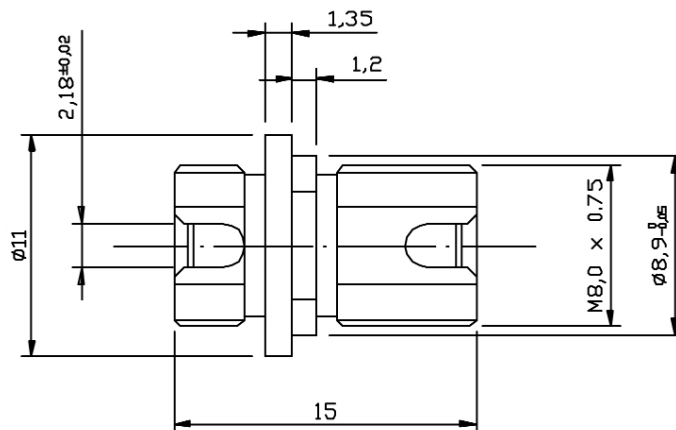
FIS FC D-SHAPE THREADED ADAPTER

FEATURES

- Compliant with NTT, EIA / TIA specifications
- Low insertion loss
- Compact and lightweight
- Easy installation on panels
- Perfect durability
- Precision alignment straight split sleeves

APPLICATIONS

- Telecommunications
- Local area network
- Fiber optic instruments
- Testing optical devices



SPECIFICATIONS

Optical Characteristics

Materials	303 Stainless Steel
Typical Ferrule Protrusion (inches)	.015 - .020

Mechanical Characteristics

Materials	303 Stainless Steel
Typical Ferrule Protrusion (inches)	.015 - .020
Operating Temperature (°C)	.Min -20° Typ. + 25° Max +60

Materials

Body	Nickel plated brass
Dust Cap	Vinyl
Sleeve	Zirconia or Phosphor Bronze
Hexagonal Nut	Nickel plated brass
Washer	Nickel plated brass

Part Numbers

F1-8501
F1-8521S (APC)

RECOMMENDED PANEL HOLE

